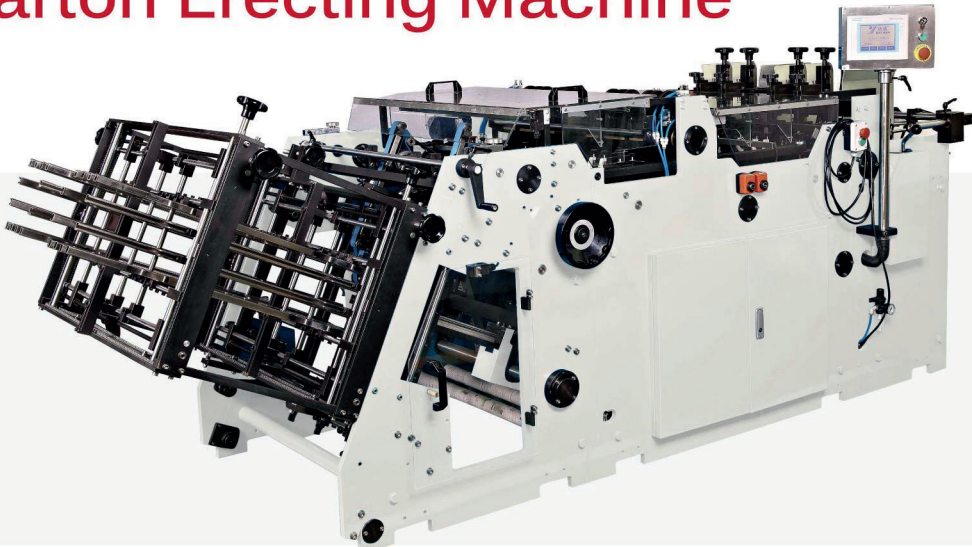


## Carton Erecting Machine



### L1000/2-A

#### Specifications

- 1.Voltage: 380V/50HZ
- 2.Covering Area: 4.0M\*1.4M
- 3.The total Power: 8KW
- 4.Maximum Production Speed: 400 pcs/min
- 5.Air Pressure: 0.6Mpa (Dry and clean compressed air)
6. Packing:

#### L1000/2-A:

2960mm\*1520mm\*1520mm,  
N.W.: 1800KG、G.W.: 2200KG  
1360mm\*1360mm\*870mm,  
N.W.: 350KG、G.W.: 450KG

#### L1000/2-B:

2660mm\*1700mm\*1560mm,  
N.W.: 1800KG、G.W.: 2200KG  
1360mm\*1100mm\*1150mm,  
N.W.: 350KG、G.W.: 450KG

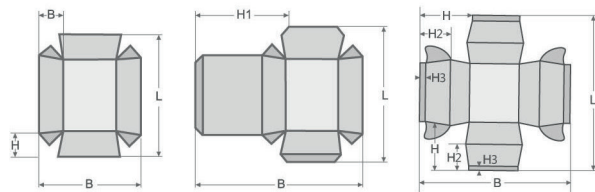
7.Materials: Paper Board 200-600gsm; corrugated board paper with thickness not exceed 1.5MM.

#### The difference among L1000/2-A/B/C:

L1000/2-A only can make the same box on the two lanes at the same time.

L1000/2-B can make the different box on the two lanes at the same time.

L1000/2-C adopts machineical device to control the punching head.



| Machine type             | L1000/2-A |             |
|--------------------------|-----------|-------------|
| Blank length             | L         | 100mm-450mm |
| Blank length             | B         | 100mm-420mm |
| Height of side flaps     | H         | 15mm-220mm  |
| Height of side flaps+lid | H1        | 50mm-200mm  |
| Height of folded flap    | H2        | 10mm-60mm   |
| Height of folded flap    | H3        | 10mm-50mm   |
| Conicity                 |           | 5°-40°      |