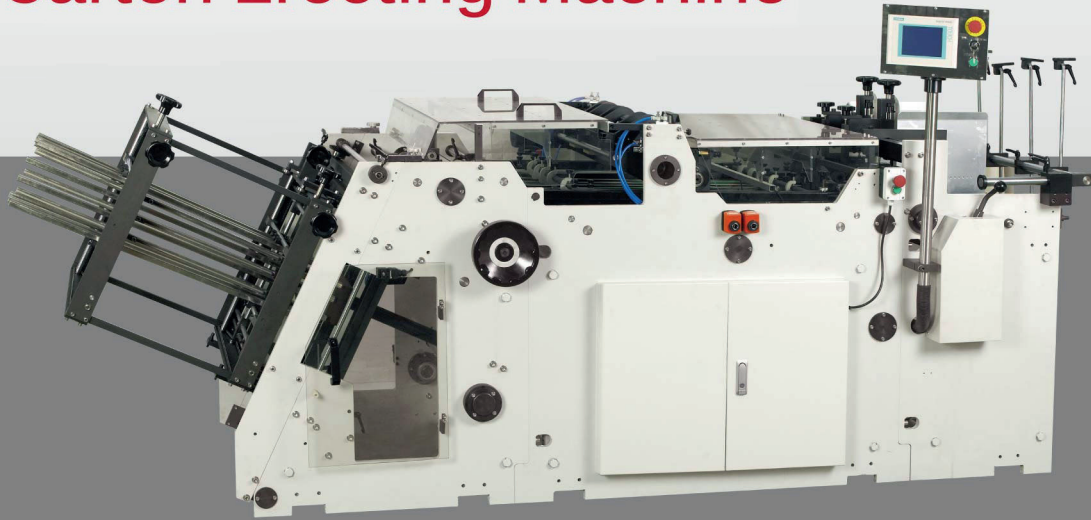


## Carton Erecting Machine

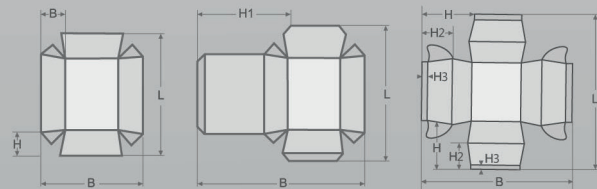


### L800-A



#### Specifications

- 1.Voltage: 380V/50HZ
- 2.Covering Area: 4.0M\*1.2M
- 3.The total Power:  
L800-A:8KW  
L800-C:5KW
- 4.Maximum Production Speed: 200 pcs/min
- 5.AirPressure:0.6Mpa(Dryandclean compressed air)
- 6.Packing:  
2980mm\*1560mm\*1320mm,  
N.W.: 1500KG、 G.W.: 1600KG  
1310mm\*1170mm\*900mm,  
N.W.: 250KG、 G.W.: 290KG
- 7.Materials: Paper Board 200-600gsm; corrugated board paper with thickness not exceed 1.5MM.



Machine type	L800-A	
Blank length	L	100mm-450mm
Blank length	B	100mm-630mm
Height of side flaps	H	15mm-220mm
Height of side flaps+lid	H1	50mm-200mm
Height of folded flap	H2	10mm-60mm
Height of folded flap	H3	10mm-50mm
Conicity		5° -40°

#### The differences between L800-A and L800-C:

- 1.L800-A adopts servo system to control the punching head,but L800-C adopts mechanical device to control the punching head,so L800-A is easier to change different box than L800-C.
- 2.L800-A is better to make eight corners boxes than L800-C.